

M.M. Cor. Sec. 26 T. 7. N.
 R. 2. W.

55° 53' S.

1075
 0 + 23 = P.T.
 1073

Angle Left 25° 00'
 T.D. 10° curv = 127.

1072
 1070 + 73 = P.C.
 1060

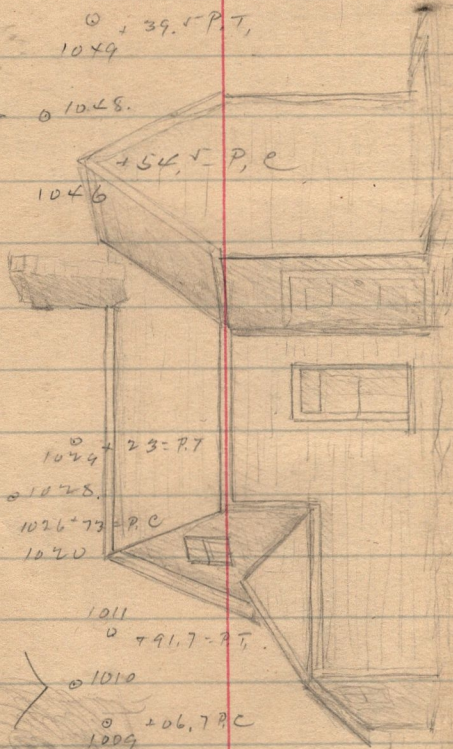
Mag 51° N.
 S 19° 01' W

1050
 0 + 39.5 = P.T.
 1049

Angle Left 28° 30'
 T.D. 10° curv = 145.5

1048
 + 54.5 = P.C.
 1046

S 47° 23' W.



Angle Left 25°
 T.D. 10° curv = 127.

1024 + 23 = P.T.
 1025
 1026 + 73 = P.C.
 1020

S 72° 37' W.

1011
 0 + 91.7 = P.T.

Angle Left 18° 30'
 T.D. 10° curv = 93.3

1010
 0 + 06.7 = P.C.
 1009

N 88° 53' W.

1008
 1007
 1006
 1005

Rear sketch
 of the residence on
 of M. W. Butler
 in Shelton
 Utah.

1/4 in
 1/2 in
 1 in